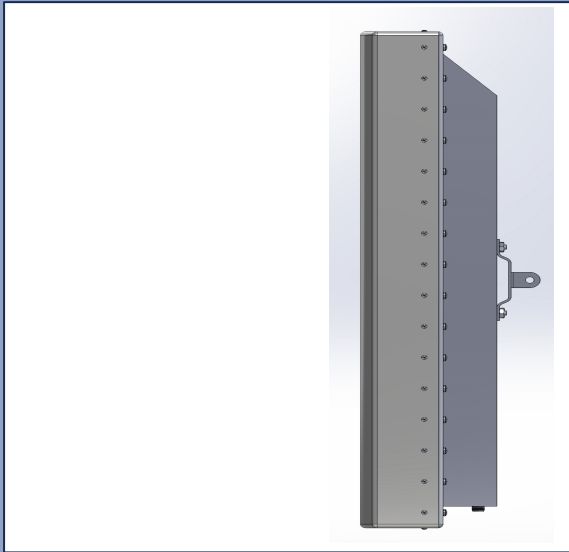


4-Beam System Model No. ET2P2600X88/AH

This system is comprised of a Phased Array antenna incorporating beamforming and beam shaping networks, producing four beams in 120° azimuth beamwidth. The system operates in the 2.5-2.7 GHz band. Ideal for increase in capacity and throughput. Permits frequency reuse. Compatible with all radio manufacturers.



Electrical Specifications	
Frequency Range	2.5-2.7 GHz
	□
Power Output	0dBm
Beamwidth	120°
Beam Spacing	120°
Gain	15dBi
Efficiency	100%
Impedance	50Ω
Temperature Range	-40C to +65C
Humidity	0%
Shock	0g
Vibration	0g
MTBF	0
Warranty	0

Mechanical Specifications

Length	1m
Width	10 in.
Depth	10 in.
Weight	10lbs.
Fabrication	High quality low loss Teflon based micro materials; copper feedlines with protective coating - UV safe fiberglass radome
Mounting	Mounting brackets conforming to site location

Environmental Specifications

Moisture	Environmentally Sealed
Temperature	-40C - +65C

